



polydentia
swiss manufacture 

CASE STUDY

Replacement of an old restoration

Courtesy of Dr Gianmarco Terry

Mexico



Dr Gianmarco Terry



Gianmarco Terry graduated with honors as a Doctor of Dental Surgery (DDS) in 1998 and earned a postgraduate degree in Orthodontics in 2002 from the Universidad Nacional Autónoma de México (UNAM). He is an active member of the Asociación Dental Mexicana (ADM) and the Colegio de Odontólogos del Valle de México (COVAM).

As a guest professor, he has contributed to the postgraduate programs in dentistry at the Faculty of Dentistry at the Universidad Central de Venezuela (UCV) and the Instituto Mexicano de Especialidades Dentales in the State of Mexico.

Since 1998, he has been running a private clinic in Mexico City, specializing in aesthetic dentistry, restorative and adhesive rehabilitation, and orthodontic treatments.

An international lecturer, Gianmarco Terry has conducted numerous hands-on courses focusing on restorative and adhesive dentistry, particularly direct composite restorations. He has been a featured speaker at many local and international conferences throughout Latin America.

products used

The Polydentia products used in this clinical case are:



myRing Forte
sectional matrix ring



myTines GO
extremities for sectional matrix ring



QuickmatFLEX
titanium sectional matrices



Quickmat All-round
Circumferential matrices

Replacement of an old restoration

Case report

The patient came for a consultation complaining of discomfort at tooth 35 and 36. Both teeth presented old composite restorations to be replaced.

Because of the absence of the adjacent molar, we decided to use a Quickmat All-round circumferential matrix to restore Molar 36 first and then proceed to an OD restoration on Premolar 35 to replace the filling with a new aesthetic restoration.

In this clinical case, we focus on the procedure for the step-by-step restoration of tooth 35 using the Polydentia QuickmatFlex sectional matrices in combination with the myQuickmat Forte sectional matrix ring accessorized with the extremities myTines GO.

pre-operative

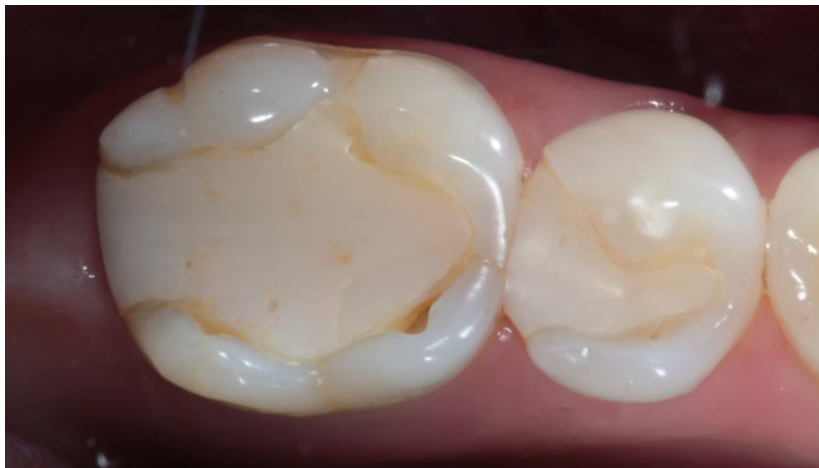
Surface
preparation

Restoration

Outcome



01



Pre-operative situation of the 3rd quadrant evidencing the two large restorations on 1st molar and 2nd premolar.

02



The quadrant under isolation.

pre-operative

Surface
preparation

Restoration

Outcome



03



Quickmat All-round was first placed and molar 36 restored.

04



The restored molar 36.

pre-operative

Surface
preparation

Restoration

Outcome



05



The old restoration on premolar 35 was then removed, the cavity cleaned and disinfected.

06



Estimation of the cusp thickness and height by using LM-Arte™ Cusp Misura (LM-Dental) for evaluating the needs for cusp preparation and choosing the restorative technique to be used.

pre-operative

Surface
preparation

Restoration

Outcome



07



The cavity equipped with the myRing Forte, myWedge and QuickmatFlex sectional matrix. To provide a stable position of the myRing Forte, myTines GO have been used.

08



The design of the extremities myTines GO grip the matrix to the tooth surfaces away from the contact point optimizing stability and allowing for a more natural, unconstrained concavity.

pre-operative

Surface
preparation

Restoration

Outcome



09



The distal wall of premolar 35 was restored first. LM-Arte™ Condensa (LM-Dental) was used to pack and shape the composite material.

10



LM-Arte™ Posterior Misura (LM-Dental) was used to model the correct height of the interproximal wall

pre-operative

Surface
preparation

Restoration

Outcome



11



Once the distal surface of premolar 35 has been restored, the myRing Forte and sectional matrix were removed.

12



Measure the space for the last one layer of composite with LM-Arte™ Posterior Misura (LM-Dental) .

pre-operative

Surface
preparation

Restoration

Outcome



13



Occlusal surface modeling with LM-Arte™ Fissura (LM-Dental). Occlusal view of the clinical situation before finishing and polishing, evidencing the natural interproximal anatomy afforded by the matrix system.

14



Post-op view of the restoration after dam removal and an occlusal check.

pre-operative

Surface
preparation

Restoration

Outcome



15



Occlusal view of the final restoration result.

16



Final result on tooth 35 after the finishing and the polishing.

Replacement of an old restoration with myTines GO

Conclusion

The myTines GO extremities by Polydentia are specifically designed to optimize efficiency and precision in Class II restorations, especially in cases where the spaces are wide and extensive. These extremities provide exceptional stability to the matrix, preventing deformations due to being secured at a greater distance from the proximal box. This not only facilitates the handling of the matrix but also accelerates the process of dental wall reconstruction, ensuring quick and effective results. The ability to keep the matrix stable and correctly positioned allows for obtaining precise margins and reducing the risk of subsequent adjustments.

clinical case courtesy of Dr Gianmarco Terry Mexico



MKTG-0122-CC-EN REV 00 09.2024 © Polydentia SA, 2024. All rights reserved. Polydentia, the Polydentia logotype and all other trademarks are, if nothing else is stated or is evident from the context in a certain case, trademarks of Polydentia. Product images are not necessarily to scale. Disclaimer: Some products may not be available for sales in all countries. Please contact the local Polydentia distributors (www.polydentia.ch/en/distributors/) for current product assortment and availability. The mentioned Polydentia products are for professional use only. Not all medical devices used during the case are Polydentia devices. Full procedure is not shown. Certain sequences have been cut. Please refer to applicable IFUs, where available, for full instructions. Polydentia is a medical device manufacturer and does not dispense medical advice. Polydentia does not take any liability for any injury or damage to any person or property arising from the use of this clinical case. This clinical case is not intended to recommend any measures, techniques, procedures or products, or give advice, and is not a substitute for medical training or your own clinical judgement as a healthcare professional. Viewers should never disregard professional medical advice or delay seeking medical treatment because of something they have seen in this clinical case. The opinions expressed are those of the doctor. Clinicians should use their own professional judgment in treating their patients. Individual patient outcomes may vary.

thanks for your attention!

Contact us

 Via Cantonale 47, 6805 Mezzovico-Vira, Switzerland

 info@polydentia.ch

 www.polydentia.ch

Follow us

 facebook.com/polydentia

 [@polydentia](https://www.instagram.com/polydentia)

 www.youtube.com/user/POLYDENTIASA

