

Multiple Class II restorations with optimal results

Procedure/Study by

Dr. Katherine Losada - Switzerland

myRing Forte - myTines Small



Dr Katherine LOSADA graduated from the Universidad Central de Venezuela (Caracas). Since 2008 she is working as private practitioner in Zurich, Switzerland. As an affiliate member of the European Academy of Aesthetic Dentistry (EAED), she dedicates her practice to aesthetic and conservative dentistry, with a special highlight on digital approaches. Nevertheless, Katherine always focus on the patient first, taking care of providing the best treatments according to the clinical situation and patient's needs.

Case Report

A 28 years old male patient came to our attention complaining of pain by chewing and some sensibility in correspondence of the first Quadrant. A preliminary clinical evaluation and bite X-rays evidenced the presence of multiple primary and secondary carious lesions on premolar 15 and molars 16 and 17 under previous composite restorations.

The following images show part of the step-by-step on direct composite restorations procedure with multiple cavities and specially the first molar (16) using the new extremities myTines Small (Polydentia) in combination with myRing Forte sectional matrix ring (Polydentia).



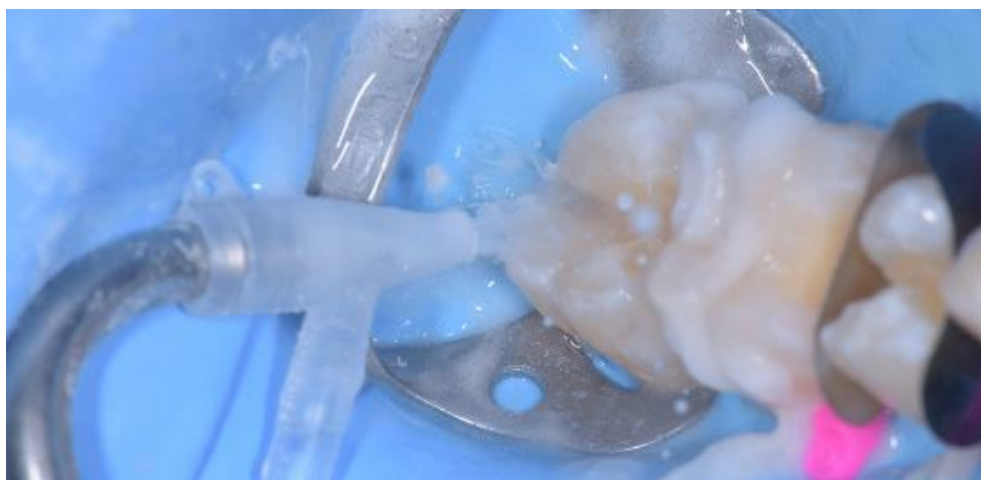
01

Pre-operative view; the preliminary analysis highlighted the presence of two class II carious lesion on premolar 15 mesial and distal, a class I and class II carious lesion on molar 16 mesial and a MO carious lesion on 17.



02

The quadrant during the preparations of the cavities, removal of carious lesions and old composite restorations. The small size of the cavities makes the present clinical situation well suited for the use of the extremities myTines Small in combination with the sectional matrix ring myRing Forte



03

Cleaning the cavities using air abrasion Aluminium Oxide 29um. A clean, rough surface is an essential condition for any successful adhesive procedure.



04

Molar 16 equipped with myWedge XS, LumiContrast sectional matrices and myRing Forte sectional ring combined with the new ring's extremities myTines Small. The flexible geometry of the extremities myTines Small significantly improves the adaptation of the ring to the proximal morphology ensuring an ideal stability even in case of reduced crown height. The other Restorations on 17 and 15 were performed with the same procedure.



05

The quadrant after filling the cavities with direct composite and performing the finishing processes. The contact points and contour are optimal after removal of the myWedge XS and LumiContrast sectional matrix.



06

View after removal of the rubber dam and occlusal check



07

Post-operative view of the restoration after 6 Weeks.

Conclusion

The use of the appropriate Matrix System combined with myWedge XS and myRing Forte sectional ring from Polydentia allows us to properly perform multiple Class II restorations as described in the case above. The precision of the new sectional matrix ring's extremities myTines Small adapted on myRing Forte provides a secure and firmly adaptation of the Lumicontrast sectional matrix to the walls of the proximal cavities assuring a good stability during the build up of the cavities by composite filling. The matrix system enabled us to create a seamless transition between the restored marginal contour and cavity edges. I totally recommend the new myTines Small on myRing Forte. It was never so easy to adapt the matrix without having stability troubles, now they are part of my daily restorative routine.