

Guide

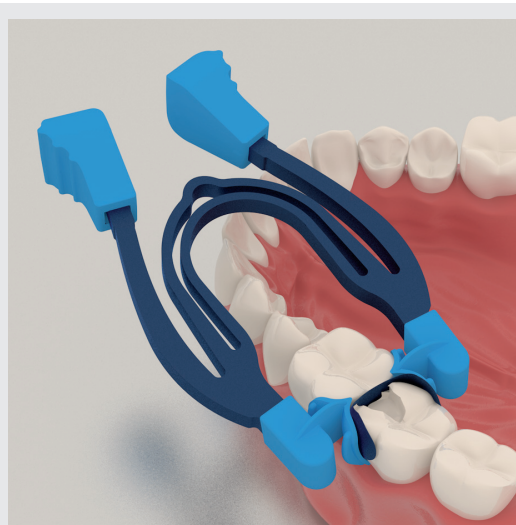
select your matrix system

and find the ideal solution to always
achieve excellent contact points in the
restoration of class II cavities



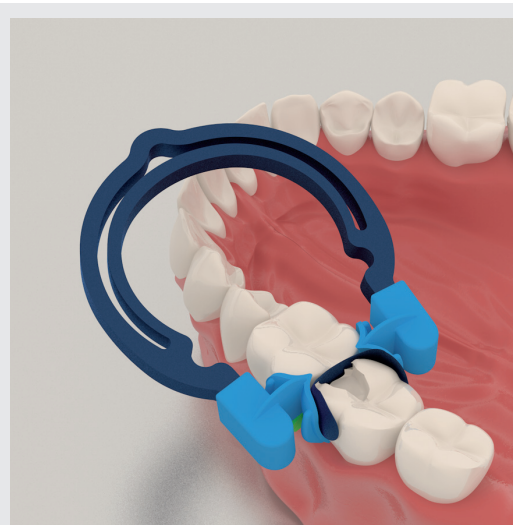
sectional
matrix
systems

Select your matrix system and find the ideal solution to always achieve excellent contact points in the restoration of class II cavities:



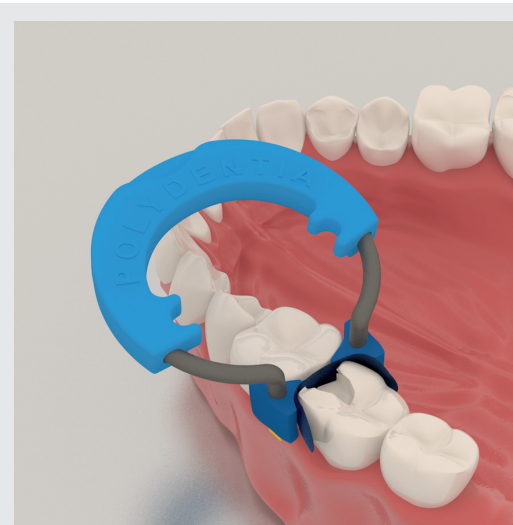
myClip 2.0

All in one sectional matrix ring with integrated forceps that allows for one-handed placement, simply by using the fingers. MyClip 2.0 used in combination with the wooden wedges provides tooth separation, additionally its anatomically shaped, reusable tines ensure perfect matrix adaptation.



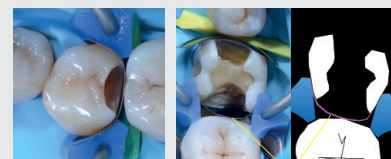
myQuickmat Forte

Sectional matrix system developed to offer strong tooth separation. MyRing Forte separates the teeth, its anatomically shaped, reusable tines ensure perfect matrix adaptation and myWedge forms the matrix band to the cervical area of the tooth.

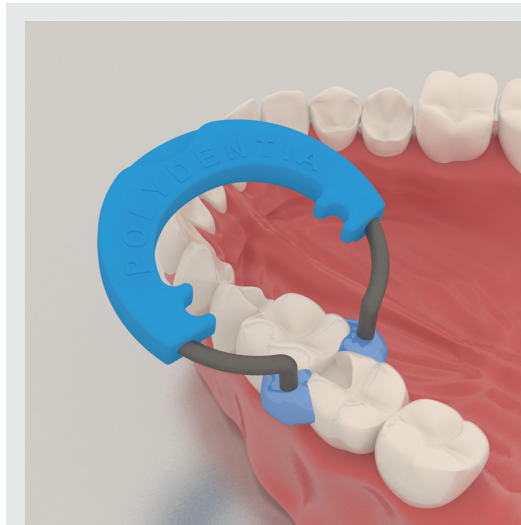


myQuickmat Classico

Sectional matrix system developed to offer optimal and gentle tooth separation using the NiTi myRing Classico in combination with the included interdental Maple Wood Wedges. The anatomically shaped, reusable, silicone Delta Tubes, ensure optimal matrix adaptation.

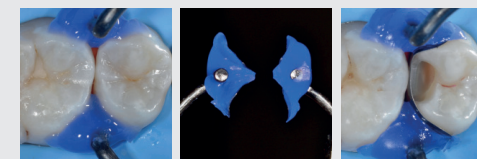


"No matrix deformation even in case of broad cavities"



myCustom Rings

The myCustom Rings technique allows to easily recreate the pre-existing interproximal anatomy. The ring tines are custom-shaped by taking an impression of the healthy and intact proximal walls using the included light curing composite material myCustom Resin.



Sectional matrix band: select the matrix according to the tooth height and to the type of restoration to be performed

Quickmat Sectional Matrices:

contoured, anatomically shaped sectional matrices made of premium quality stainless steel. Available in two different thicknesses, thin (0.04 mm / .0016”), microthin (0.025 mm / .001”) and also extended for cervical subgingival restorations.

LumiContrast Sectional Matrices:

contoured, anatomically shaped sectional matrices. Thanks to their dark-blue unique colouring, Polydentia’s LumiContrast sectional matrices significantly increase contrast and reduce glare effect, especially while using loupes or microscopes. Available in two different thicknesses, thin (0.04 mm / .0016”), microthin (0.025 mm / .001”) and also extended for cervical subgingival restorations.

Transparent sectional matrices:

contoured, anatomically shaped sectional matrices made of first quality polyester, permeable to curing lights. The special material does not tear under tension, nor adhere to any composite restorative materials.

Matrix Thickness

Differently than the choice of the matrix shape and its material, which are selected based on the tooth height and restoration, the matrix thickness depends on the personal choice of each dentist. Thin matrices 0.04 mm / .0016” are strong and rigid, and are the most frequently used as adapted to the majority of the clinical cases. Microthin matrices 0.025 mm / .001” are used in case of narrow interdental spaces, allowing to obtain very tight contact points with an ideal morphology.

Quickmat Sectional matrices

	 REF 5735	 REF 5736	 REF 5756	 REF 5705	 REF 5706	 REF 5746
Thickness	0.025mm / .001"	0.025mm/.001"	0.025mm/.001"	0.04mm / .0016"	0.04mm / .0016"	0.04mm / .0016"
Height	5mm	6.4mm	6.4mm	5mm	6.4mm	6.4mm
Commonly used for	Bicuspids and Pediatric applications	Molars	Molars with deep cervical preparation	Bicuspids and Pediatric applications	Molars	Molars with deep cervical preparation

Lumicontrast Sectional matrices

	 REF 6735	 REF 6736	 REF 6756	 REF 6705	 REF 6706	 REF 6746
Thickness	0.025mm / .001"	0.025mm/.001"	0.025mm/.001"	0.04mm/ .0016"	0.04mm/ .0016"	0.04mm/ .0016"
Height	5mm	6.4mm	6.4mm	5mm	6.4mm	6.4mm
Commonly used for	Bicuspids and Pediatric applications	Molars	Molars with deep cervical preparation	Bicuspids and Pediatric applications	Molars	Molars with deep cervical preparation

Transparent Sectional matrices

	 REF 5765	 REF 5766	 REF 5776
Thickness	0.075mm / .0029"	0.075mm/.0029"	0.075mm/.0029"
Height	5mm	6.4mm	6.4mm
Commonly used for	Bicuspids and Pediatric applications	Molars	Molars with deep cervical preparation